



ARNEC

Asia-Pacific Regional Network
for Early Childhood

Working together for Early Childhood





Working together for Early Childhood

Our Vision 2020

Our Vision. ARNEC's vision guides and inspires us as a network dedicated to advancing Early Childhood Development (ECD) in the Asia-Pacific region:

All young children in the Asia-Pacific region realise optimal well-being and development.

Our Mission

With ARNEC's vision guiding us, our mission will help us navigate and provide a way forward for our partners, members and stakeholders:

ARNEC shares knowledge and advocates for children's rights and inclusive and holistic ECD.

Our Core Values

Our core values serve as our common identity and guide our behaviours and actions as we interact with each other and with partners, donors and all other stakeholders. As we pursue our Mission, we will be guided by our core values:

- **Rights-based approaches**

We uphold and advocate for the protection of children's rights in accordance with the UN Convention on the Rights of the Child.

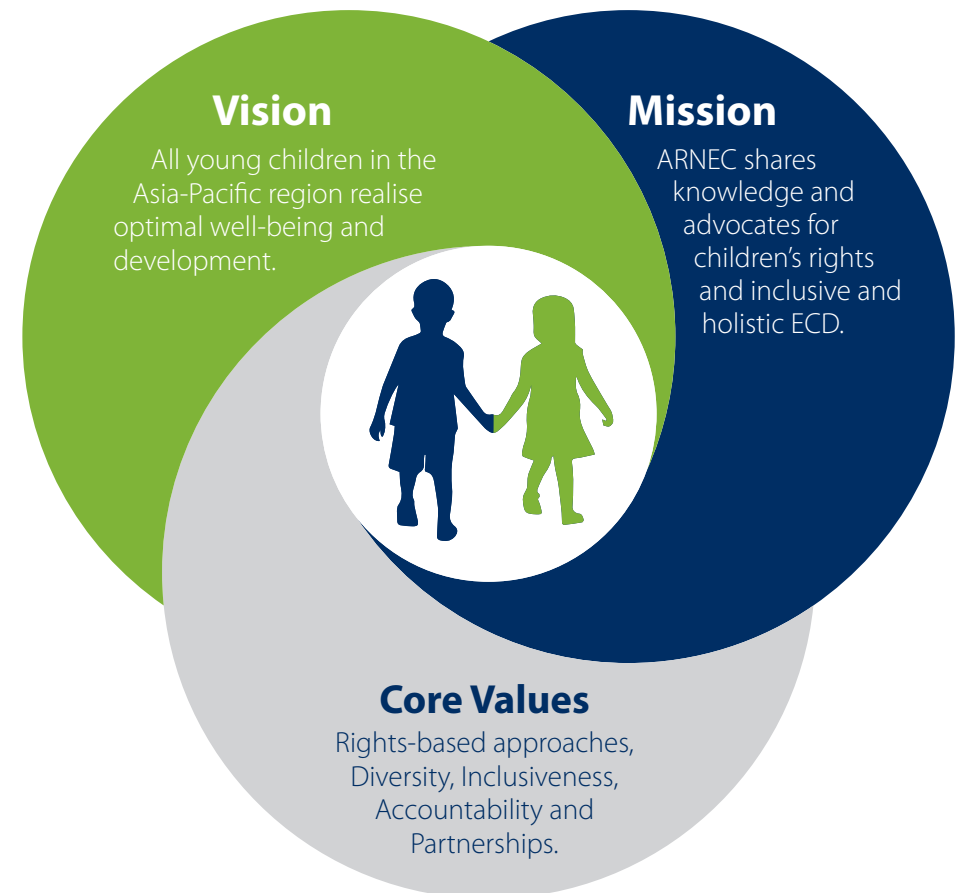
- **Diversity**

We respect diversity in our membership and in the ECD community. We uphold non-discrimination and make our knowledge and information available to our members.

- **Inclusiveness**

We are inclusive and we encourage our members to actively participate in our activities as we highly value their inputs. We ensure that our work responds to the needs of our members and to the whole ECD community in the region.

ARNEC sets vision for 2020 for young children in the Asia-Pacific Region





- **Accountability**

We hold ourselves responsible to our members, partners, donors and stakeholders. We ensure clarity, transparency and openness in our relationships and in our decision-making processes.

- **Partnerships**

We are a group of equal partners who consult and share information, ideas, and good practices with each other. We strive to build strong partnerships with people and institutions who share our vision so that together we can ensure all children have quality ECD experiences.

Who we are

Working together for Early Childhood – ARNEC is a network established to build strong partnerships across sectors and different disciplines, organisations, agencies and institutions in the Asia-Pacific region to advance the agenda on and investment in Early Childhood.

Today, ARNEC is the largest and fastest growing network for Early Childhood Development (ECD) in the Asia-Pacific Region.

It serves as a knowledge and learning platform for ECD professionals, experts, government institutions, NGOs and programme practitioners.

Our Strategic Goals

ARNEC has four strategic goals which define the outcomes we want to achieve by the end of 2020. The strategic goals signify our purpose as a network. They illustrate what the network will strategically focus on to enable ARNEC to bring about lasting and positive change in early childhood development in the region. All are interconnected and essential for the impact we wish to have in every country and in our network.

Strategic Goals

Goal 1

Improve advocacy for holistic and inclusive ECD

ARNEC will continue to engage policy makers and key stakeholders, including its members, in advocating the holistic nature of ECD in policies and programmes and the strong interlinkages of SDG Target 4.2 with the rest of the SDGs.

Goal 2

Increase the knowledge-base on ECD

ARNEC will work with partners to generate and consolidate new knowledge through research, documentation of good practices and the development of ECD tools and other resources.

Goal 3

Increase strategic partnerships and memberships

ARNEC will encourage more institutional and individual members ensuring full participation from highly diverse partners and members including research institutions, universities, corporations and foundations.

Goal 4

Strengthen ARNEC's reach and impact at the country level

ARNEC will form and/or strengthen linkages and broaden partnerships with national level ECD networks and associations.

A little history

The concept for ARNEC emerged from the Joint UNICEF-UNESCO Early Childhood Policy Review Project (2006-08) where participants from nine countries (Pakistan, Nepal, Mongolia, China, the Philippines, Indonesia, Malaysia, Lao PDR and Singapore) met to discuss the possibilities of forming a regional early childhood professional network that would cross all disciplines and sectors.

During the policy review, countries found that relevant policies were uncoordinated and fragmented and where there were gaps in policy, gaps in implementation followed. At that time the primary goal of ARNEC was to share knowledge of effective policies and practices related to early childhood for the benefit of all countries in the region.

Initially, three partners – the Plan Asia Regional Office, the UNESCO Asia-Pacific Regional Bureau for Education and the UNICEF East Asia and Pacific Regional Office – signed a Memorandum of Understanding to support the establishment and development of ARNEC. A Steering Committee was formed and ARNEC was formally launched at the final Early Childhood Policy review seminar in February 2008. The ARNEC Secretariat was temporarily based at the UNICEF East Asia and Pacific Regional Office, Thailand, from 2008-2009. In May 2009, the SEED Institute in Singapore (formerly RTRC Asia) was appointed to host the Secretariat on a three-year basis, and ARNEC was incorporated as an independent entity in Singapore on 14 January 2010. Since then the Secretariat has been operating independently in Singapore.

Membership

Joining the ARNEC network

Since 2008 ARNEC has gained over 2,000 individual and 15 institutional members and continuously works in partnership with several important national/international organisations.

Individual membership

Anyone can join as an individual member who would like to help promote the cause of Early Childhood Development for the Asia-Pacific Region and beyond, connect with other ECD professionals and participate in ARNEC activities and advocacy campaigns. Individual membership with ARNEC is free, and you may simply sign up online via:

www.arnec.net

Institutional membership

(Requires application and formal agreement with ARNEC)

Institutional membership with ARNEC is open to any national, regional or global organisation, network, academic institution, corporation or entity which actively promotes Early Childhood Development and whose objectives align with those of ARNEC.

Core team membership

(Requires application and formal agreement with ARNEC)

Being a Core team member of ARNEC, your organisation will be part of the governance structure of ARNEC and will be represented on ARNEC's Steering Committee. Core team organisations are vital in sustaining the network and providing financial and non-financial support.

Interested to join ARNEC? Do you have ideas on how you would like to collaborate with ARNEC? Then do get in touch via secretariat@arnec.net

Governance

The Board of Directors provides leadership to the Network and challenges, develops and approves the network's strategic aims as formulated by the Steering Committee and ensures that the annual plans and budgets are aligned with the financial resources available in order for the Network to meet its objectives.

The ARNEC Steering Committee makes recommendations and advises on the network's strategic goals, direction and work plan; increases partnerships; and strengthens ARNEC's reach and impact.

ARNEC is operated by its **Secretariat** which supports effective coordination and communications among ARNEC's membership and partners to facilitate planning, development and implementation of the work plan.

Working groups serve to develop and guide the network's key activities. They are time-bound and formed based on project needs. They may include involvement of individual members who wish to participate in ARNEC's activities and events, under the leadership of a Steering Committee member, and work in collaboration with the Secretariat.

ARNEC National Representatives essentially act as the voice and focal point for the ARNEC network in their respective country in the Asia-Pacific region. He/she also brings to ARNEC's attention country-level early childhood development issues, events and needs which can influence the regional ECD agenda.



ARNEC is supported by the following partners and core team organisations



Sustainable
Development
Goals



Save the Children



secretariat@arnec.net www.arnec.net

